



Net-ATA Quick Setup Guide

Revision 1.1 for Net-PBX version 2.0

For latest version please go to www.net-voice.net/documentation.php

Please report any problems or omissions found to support@net-voice.net

Legal notice

Net-Voice[®] and the Net-Voice logo are registered trademarks of Net-Voice Limited. Only Net-Voice Limited and its authorised resellers and licensees may use the Net-Voice logo in advertising, promotional, and sales materials.

This document and its contents are copyright of Net-Voice Limited. All rights reserved. Any unauthorised redistribution or reproduction of part or all of the contents of this document in any form is prohibited.

1. Physical Setup

This section describes how to physically setup the Analog Terminal Adapter (ATA).

1. Connect the UK power plug to the power adapter.
2. Connect the Net-ATA to the network using either the supplied cable or any standard Ethernet cable.
3. To configure the Net-ATA, an analogue phone or fax machine with a handset is required. Plug this device into the 'Phone' socket on the right side of the Net-ATA. If you intend to use a fax machine or other device without a handset, this can be exchanged after the setup is complete.
4. Plug the power adapter into the mains and connect it to the Net-ATA.

To determine the current IP address of the Net-ATA, lift the handset on the connected device and press the '*' key four times. You will then hear an announcement. Dial 110#. You will then hear an announcement informing you of the current IP address of the Net-ATA.

Once you have this IP address, if required you can replace the device connected the phone port with the one you intend to use.

The IP address used as an example in this document is 192.168.2.153

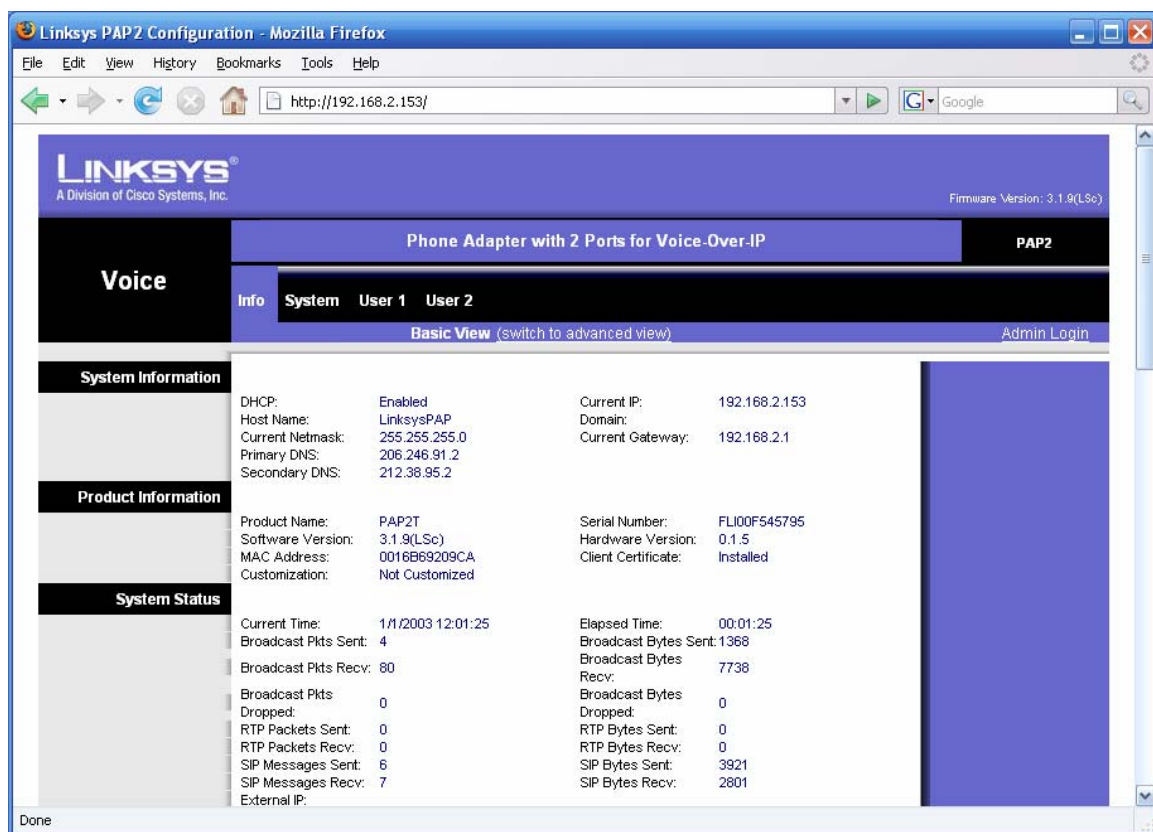
2. Configuration

The following section describes how to configure your new ATA.

2.1. Accessing the web interface

From a web browser on a computer on the same network (e.g. 192.168.2 above) type the IP address of the phone into the address bar.

This should take you to the following screen:



The Net-ATA configuration interface

There are two versions of the Net-ATA. The one shown here supports one analog device as described in the 'User 1' tab and one analog line as described in the 'PSTN User' tab. The second version has two analog device interfaces, which would be shown as 'User 1' and 'User 2'.

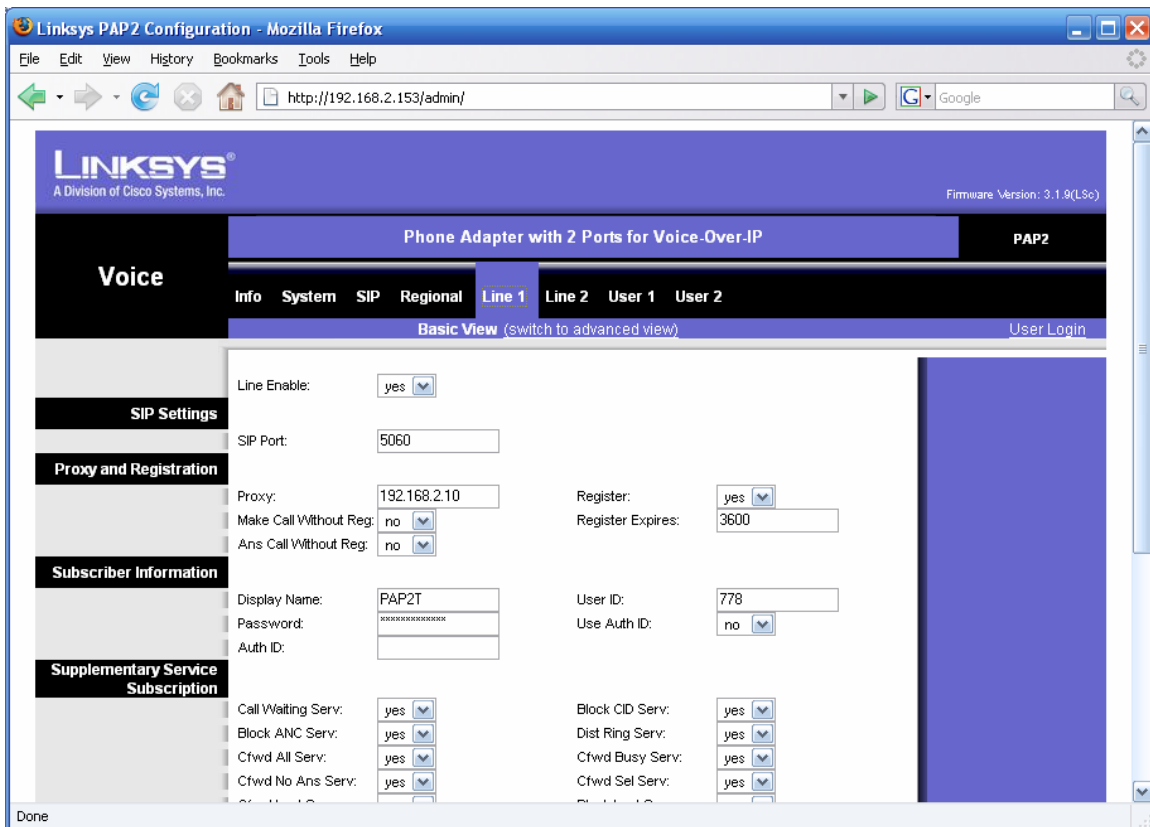
This initial screen shows the current status of the Net-ATA including all network information and versions of the software and hardware.

The initial configuration does not have a password set. This can be done from the 'System' tab.

2.2. Configuration for the Net-ATA

This section will describe how to configure 'User 1' on the Net-ATA. The procedure is the same for 'User 2'.

All initial configuration is done through the 'Admin Login'. Click on the link in the top right of the page. You will now be presented with 8 options in tabs. Choose the 'Line 1' tab and you will be presented with the following page.



Configuring 'User 1' on the Net-ATA interface

The following fields will need to be updated:

- **Proxy** – this is the IP address of the Net-PBX and can be found on the Net-PBX admin screen 'Setup->Network'.
- **Display Name** – this is a name associated with this phone. It may be the same as 'User Name' in 'User->User list' screen of the Net-PBX.

- **User ID** – this is the 'Telephone No' in the 'User->User list' screen of the Net-PBX.
- **Password** – this is the case-sensitive password assigned to this User when created; it can also be found by editing the user entry on the Net-PBX.

2.3. Submitting and applying changes

Once you have completed the updates, go to the bottom of the page and click on the 'Submit All Changes' button. This will power-cycle your Net-ATA and apply the changes you have made. To check that the Net-ATA has registered with the Net-PBX, go to the 'Status->Attached Phones' page and check that you can find the account you just set up for this ATA.