



Net-Phone 101/200 Quick Setup Guide

Revision 1.1 for Net-PBX version 2.0

For latest version please go to www.net-voice.net/documentation.php

Please report any problems or omissions found to support@net-voice.net

Legal notice

Net-Voice® and the Net-Voice logo are registered trademarks of Net-Voice Limited. Only Net-Voice Limited and its authorised resellers and licensees may use the Net-Voice logo in advertising, promotional, and sales materials.

This document and its contents are copyright of Net-Voice Limited. All rights reserved. Any unauthorised redistribution or reproduction of part or all of the contents of this document in any form is prohibited.

Approved Phones

Net-Voice has tested and approved the Grandstream 101 and 200 phones for use with Net-PBX. This document describes the set up of these phones – Net-Phone 101 (1 x RJ45 10Mbps connection), and Net-Phone 200 (2 x RJ45 10/100Mbps connections) – for use with Net-PBX.

1. Physical setup

This section describes how to set up the Net-phone 101 and Net-Phone 200.

- Connect the handset to the base unit using the coiled cable.
- Connect the base unit to the network using either the supplied cable or any standard Ethernet cable. If the phone supplied has two Ethernet ports then connect to the network using the 'LAN' port. The second port can be used to connect another Ethernet device to the network.
- Plug the power adapter into the mains and the phone.

This should result in the phone's display lighting up.

2. Configuration

The following section describes how to configure your new phone.

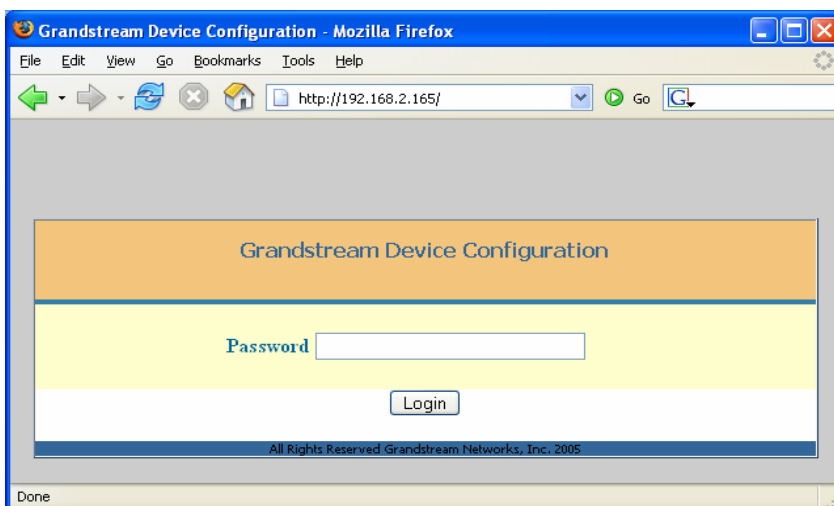
2.1. Finding the IP address

- Press the 'menu' button.
- Press the 'down arrow' once: you will see the 'IP Addr' screen.
- Press the 'menu' button again: this will display the phone's current IP address, e.g. 192.168.002.165

2.2. Accessing the Web interface

From a web browser on a computer on the same network (e.g. 192.168.2.165 above) type the IP address of the phone into the address bar.

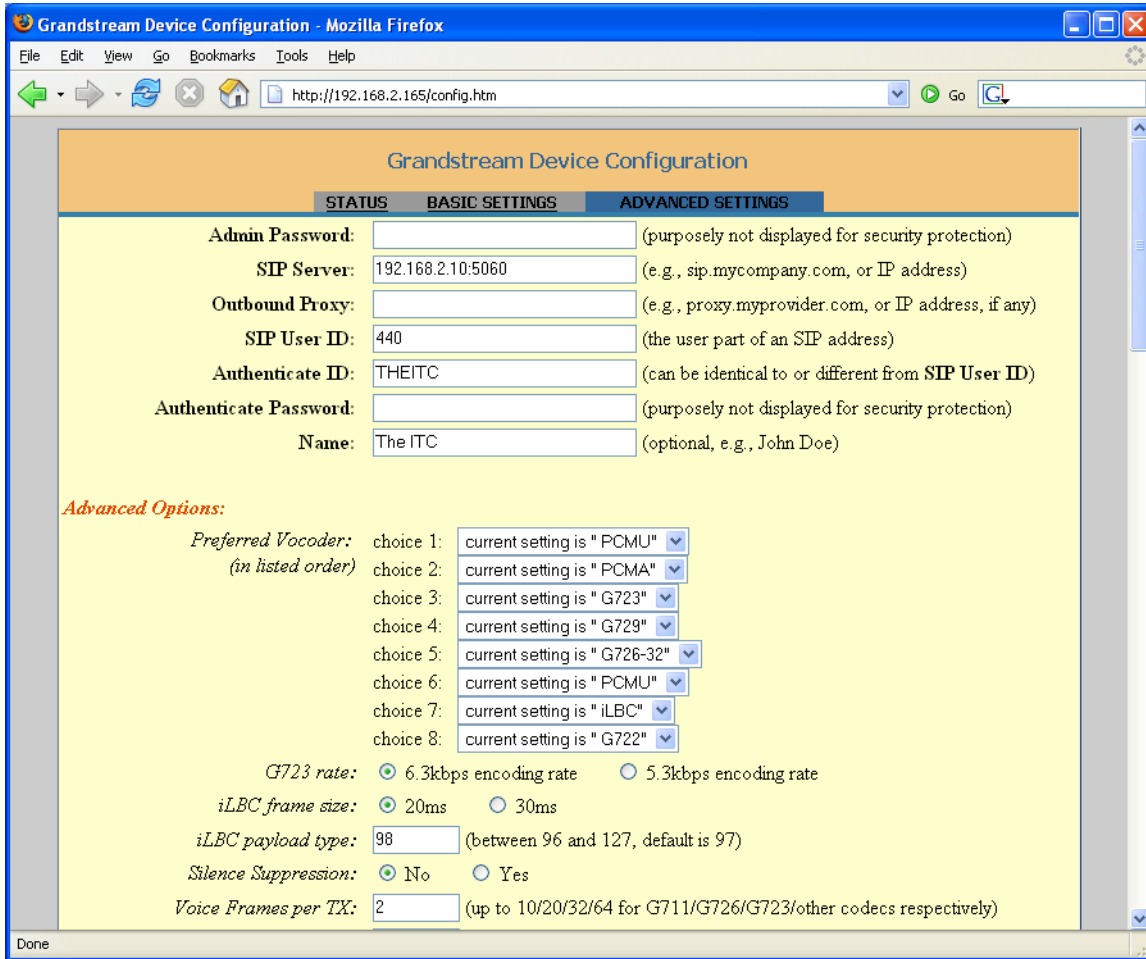
This should take you to the following screen:



Enter the 'Password' (the default is 'admin') then click on the 'Login' button or press enter.

2.3. Configuration for the Net-PBX

The following screen will be presented once you have logged into the phone:



The following fields will need to be updated:

- **SIP Server** – this is the IP address of the Net-PBX and can be found on the Net-PBX admin screen 'Setup->Network' and should be followed by ':5060'.
- **SIP User ID** – this is the 'Telephone No' in the 'User->User list' screen of the Net-PBX.
- **Authenticate ID** – is the 'User' from the 'User->User list' screen of the Net-PBX.

- **Authenticate Password** – is the case-sensitive password assigned to this user when created. It can also be found by editing the user entry on the Net-PBX.
- **Name** – should correspond to the 'Full name' assigned to the user. Again, this can be checked by editing the entry as above.

In the 'Advanced Options' section the following entries should be checked:

- **Preferred Vocoder** – should be ordered as shown in the picture above.

Set the following parameters:

- **UserID is phone number** – set to 'Yes'
- **SIP registration** – set to 'Yes'
- **VoiceMail UserID** – set to '*17'
- **Enable Call Features** – set to 'No'
- **Disable call waiting** – set to 'Yes'
- **Send DTMF** – set to 'RF2833'

Under the 'BASIC SETTINGS' tab set the following information:

- **Timezone info** – set to 'GMT'
- **Date display format** – set to 'DD-MM-YYYY'

2.4. Apply Changes

Once you have completed the updates, go to the bottom of the page and click on the 'Reboot' button. This will power cycle your phone and apply the changes you have made. To check that the phone has registered with the Net-PBX go to the 'Status->Attached Phones' page and ensure you can find the account you just set up on the phone.