



## Net-ATA 3000 Quick Setup Guide

Revision 1.1 for Net-PBX version 2.0

For latest version please go to [www.net-voice.net/documentation.php](http://www.net-voice.net/documentation.php)

Please report any problems or omissions found to [support@net-voice.net](mailto:support@net-voice.net)

## **Legal notice**

Net-Voice<sup>®</sup> and the Net-Voice logo are registered trademarks of Net-Voice Limited. Only Net-Voice Limited and its authorised resellers and licensees may use the Net-Voice logo in advertising, promotional, and sales materials.

This document and its contents are copyright of Net-Voice Limited. All rights reserved. Any unauthorised redistribution or reproduction of part or all of the contents of this document in any form is prohibited.

## 1. Physical Setup

This section describes how to physically setup the Analog Terminal Adapter (ATA) series 3000.

**N.B. The ATA 3000 is set to the default IP address of 192.168.0.1  
To do the initial configuration of the ATA 3000 it will need to be  
connected directly to a PC via an Ethernet cable.**

**This document is written based on the ATA 3102 product.**

1. Connect the UK power plug to the power adapter.
2. Connect the Net-ATA 3000 from the 'ETHERNET' port to a computer using the supplied Ethernet cable.
3. Plug the power adapter into the mains and connect it to the Net-ATA.

The IP address is fixed as 192.168.0.1. Entered this address into a browser window to access the ATA's Web configuration pages.

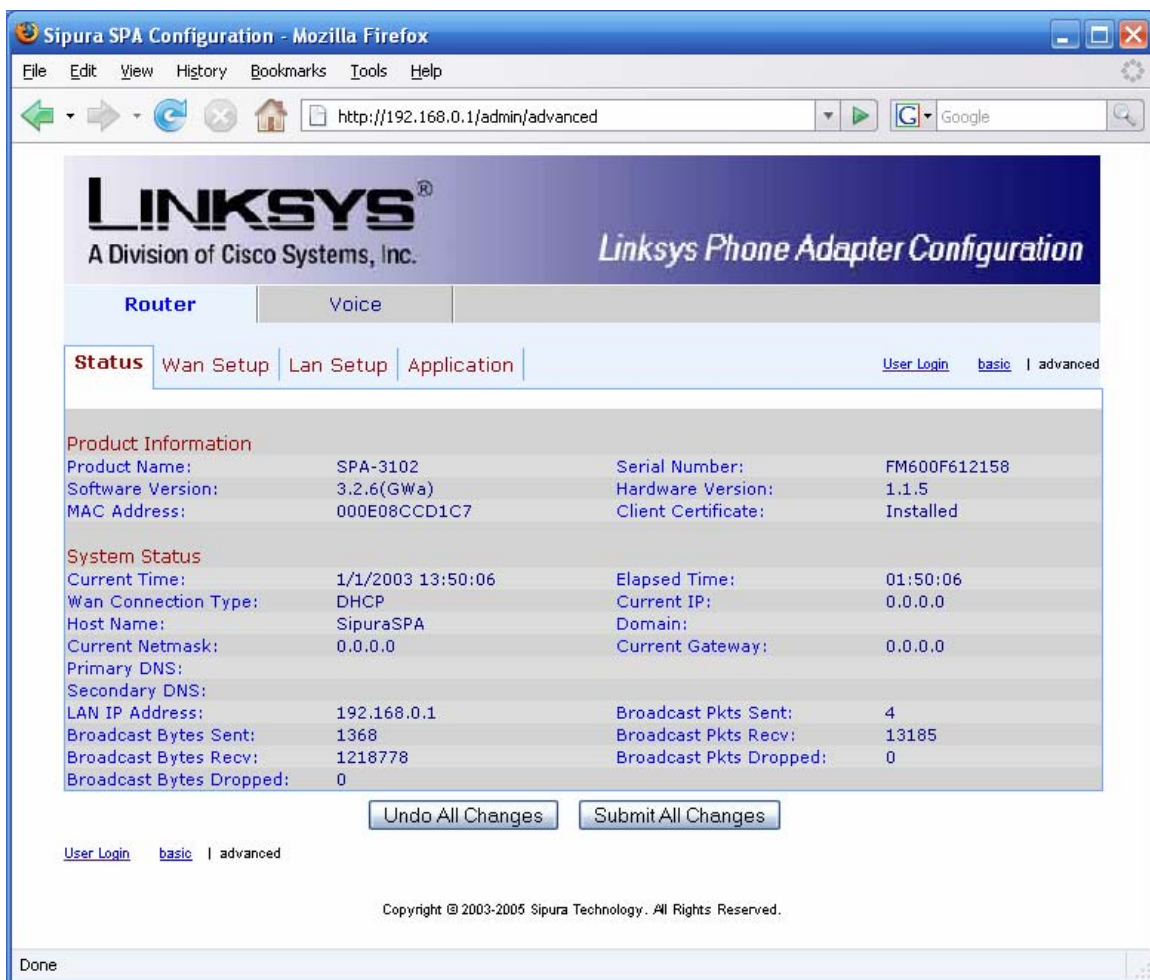
## 2. Configuration

The following section describes how to configure your new ATA.

### 2.1. Accessing the web interface

From a web browser on the computer directly connected to the 'ETHERNET' port of the ATA 3000, type in the following address: 192.168.0.1/admin

This should take you to the following screen:



**The Net-ATA configuration interface**

There are several versions of the Net-ATA depending on the number of lines and phones supported. The one shown here supports one analog device as described in the 'User 1' tab and one analog line as described in the 'PSTN

User' tab. Other versions have two analog device interfaces, which would be shown as 'User 1' and 'User 2'.

This initial screen shows the current status of the Net-ATA including all network information and versions of the software and hardware.

The initial configuration does not have a password set. This can be done from the 'System' tab.

## 2.2. Configuration for the NetATA

This section will describe how to configure 'User 1' on the Net-ATA. Where applicable, the procedure is the same for 'User 2'.

All initial configuration is done through the 'Admin Login'. Click on the 'Advanced' and then the 'Admin' link in the top right of the page. You will now be presented with several options in tabs. Choose the 'Line 1' tab and you will be presented with the following page.

Line Enable:	yes <input type="button" value="v"/>		
<b>SIP Settings</b>			
SIP Port:	5060		
<b>Proxy and Registration</b>			
Proxy:	192.168.23.10		
Register:	yes <input type="button" value="v"/>	Make Call Without Reg:	no <input type="button" value="v"/>
Register Expires:	3600	Ans Call Without Reg:	no <input type="button" value="v"/>
<b>Subscriber Information</b>			
Display Name:	User3	User ID:	103
Password:	*****	Use Auth ID:	no <input type="button" value="v"/>
Auth ID:	User3		
<b>Supplementary Service Subscription</b>			
Call Waiting Serv:	yes <input type="button" value="v"/>	Block CID Serv:	yes <input type="button" value="v"/>
Block ANC Serv:	yes <input type="button" value="v"/>	Dist Ring Serv:	yes <input type="button" value="v"/>
Cfwd All Serv:	yes <input type="button" value="v"/>	Cfwd Busy Serv:	yes <input type="button" value="v"/>
Cfwd No Ans Serv:	yes <input type="button" value="v"/>	Cfwd Sel Serv:	yes <input type="button" value="v"/>
Cfwd Last Serv:	yes <input type="button" value="v"/>	Block Last Serv:	yes <input type="button" value="v"/>
Accept Last Serv:	yes <input type="button" value="v"/>	DND Serv:	yes <input type="button" value="v"/>
CID Serv:	yes <input type="button" value="v"/>	CWCID Serv:	yes <input type="button" value="v"/>
Call Return Serv:	yes <input type="button" value="v"/>	Call Redial Serv:	yes <input type="button" value="v"/>
Call Back Serv:	yes <input type="button" value="v"/>	Three Way Call Serv:	yes <input type="button" value="v"/>
Three Way Conf Serv:	yes <input type="button" value="v"/>	Attn Transfer Serv:	yes <input type="button" value="v"/>
Unattn Transfer Serv:	yes <input type="button" value="v"/>	MWI Serv:	yes <input type="button" value="v"/>
VMWI Serv:	yes <input type="button" value="v"/>		
<b>Audio Configuration</b>			
Preferred Codec:	G711u <input type="button" value="v"/>	Silence Supp Enable:	no <input type="button" value="v"/>
Use Pref Codec Only:	no <input type="button" value="v"/>	FAX CED Detect Enable:	yes <input type="button" value="v"/>
DTMF Tx Method:	Auto <input type="button" value="v"/>		
<b>Gateway Accounts</b>			

**Configuring 'User 1' on the Net-ATA interface**

The following fields will need to be updated (all other fields can be left as their default settings):

- **Line Enable** – set to 'Yes': this will allow the line to be used by the Net-PBX.
- **SIP Port Setting** – this should be set to 5060 unless otherwise instructed by your system administrator.
- **Proxy** – this is the IP address of the Net-PBX and can be found on the Net-PBX admin screen 'Setup->Network' or will be provided by your system administrator.
- **Register** – set to 'Yes'.
- **Display Name** – this is a name associated with this phone. It may be the same as 'User Name' in the 'User->User list' screen of the Net-PBX or will be provided by your system administrator.
- **User ID** – this is the 'Telephone No' in the 'User->User list' screen of the Net-PBX or will be provided by your system administrator.
- **Password** – this is the case-sensitive password assigned to this User when created. It can also be found by editing the user entry on the Net-PBX or will be provided by your system administrator.

The following updates are required under the 'Audio Configuration' section:

- **Preferred Codec** – set to 'G711u'

### 2.3. Submitting and applying changes

Once you have completed the updates, go to the bottom of the page and click on the 'Submit All Changes' button. This will power-cycle your Net-ATA and apply the changes you have made. To check that the Net-ATA has registered with the Net-PBX, go to the 'Status->Attached Phones' page and check that you can find the account you just set up for this ATA.

### 2.4. Problems with DECT phones

Some DECT phones have been found not to work correctly with the Net-ATA 3000. This is often caused by the phones not complying to 'normal' parameters. Often, this issue can be compensated for by making the following change:

- **Login** to your Net-ATA 3000 as described above, and choose the admin and advanced options.
- **Select the 'Regional' tab** at the top of the screen.
- **Change the field** titled 'Ring and Call Waiting Tone Specs' to 'Trapezoid'.